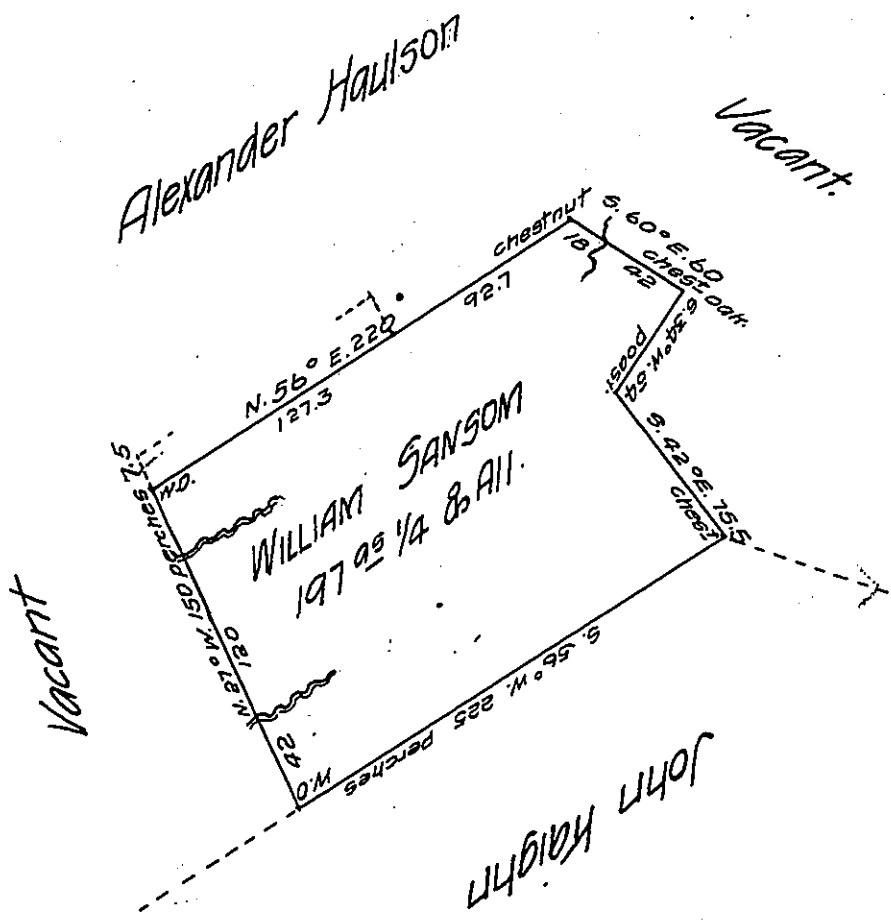


N.B. This tract of land was wholly unimproved when it was surveyed & warranted. To R.T.L. Esq- S.G. John Wells Deputy



Situate on the Banks of Bens Creek, now in Jenner Township Somerset County (formerly Quemahoning Township Bedford County) and surveyed the 29th day of March 1794 by George Woods Esquire Deputy Surveyor. In pursuance of a Warrant dated the 21st day of February 1793 as appears by his official Draught remaining in my Office at Somerset, Certified this 30th day of October 1815

John Wells Deputy

To Richard T. Leech Esquire }
Surveyor General of Penns^a }

IN TESTIMONY that the above is a copy of the original remaining on file in the Department of Internal Affairs of Pennsylvania, made conformably to an Act of Assembly approved the 16th day of February, 1833, I have hereunto set my Hand and caused the Seal of said Department to be affixed at Harrisburg, this twenty-fourth day of April 1907

Lucas B. Brown
Secretary of Internal Affairs.